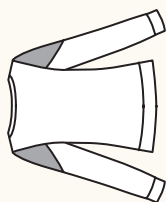


FRASER SWEATSHIRT / 3 VIEWS

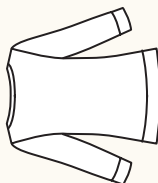
RECOMMENDED FABRICS: Medium weight knit fabrics with at least 20% stretch, such as cotton knits, sweatshirt fleece, interlocks, or French terry.

NOTIONS: Thread, 12 inches (30cm) of $\frac{1}{4}$ " (6mm) wide twill-tape or stay tape.

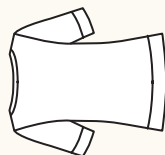
DESCRIPTION: Semi-fitted pullover knit top features set-in sleeves, contrast options, and sleeve variations. View A has contrast yoke panels, crew neckline, and long sleeves. View B has three-quarter length sleeves. View C has a set-in contrast collar detail and elbow length sleeves.



A



B



C

BODY MEASUREMENTS (centimetres)

	0	2	4	6	8	10	12	14	16	18	20
BUST	76	79	81	84	88	91	95	99	104	109	114
WAIST	61	64	66	69	72	76	80	84	89	94	99
HIP	91	94	97	99	103	107	110	114	119	125	130

FABRIC REQUIREMENTS (metres)

VIEW	0	2	4	6	8	10	12	14	16	18	20
VIEW A	0	2	4	6	8	10	12	14	16	18	20
150cm	1.8	1.8	1.8	1.8	1.8	1.8	1.8	1.8	1.8	1.8	1.8
Contrast	0.5	0.5	0.5	0.5	0.5	0.5	0.5	0.5	0.5	0.5	0.5
VIEW B	0	2	4	6	8	10	12	14	16	18	20
150cm	1.8	1.8	1.8	1.8	1.8	1.8	1.8	1.8	1.8	1.8	1.8
VIEW C	0	2	4	6	8	10	12	14	16	18	20
150cm	1.6	1.6	1.6	1.6	1.6	1.6	1.6	1.6	1.6	1.6	1.6
Contrast	0.2	0.2	0.2	0.2	0.2	0.2	0.2	0.2	0.2	0.2	0.2

FINISHED MEASUREMENTS (centimetres)

BUST	81	84	86	89	93	97	100	104	109	114	119
WAIST	76	79	81	84	88	91	95	99	104	107	114
HEM	81	84	86	89	93	97	100	104	109	114	119
LENGTH	55	55	56	57	57	58	58	59	60	60	61

BODY MEASUREMENTS (inches)

	0	2	4	6	8	10	12	14	16	18	20
BUST	30	31	32	33	34½	36	37½	39	41	43	45
WAIST	24	25	26	27	28½	30	31½	33	35	37	39
HIP	36	37	38	39	40½	42	43½	45	47	49	51

FABRIC REQUIREMENTS (yards)

VIEW	0	2	4	6	8	10	12	14	16	18	20
VIEW A	0	2	4	6	8	10	12	14	16	18	20
59/60"	2	2	2	2	2	2	2	2	2	2	2
Contrast	½	½	½	½	½	½	½	½	½	½	½
VIEW B	0	2	4	6	8	10	12	14	16	18	20
59/60"	2	2	2	2	2	2	2	2	2	2	2
VIEW C	0	2	4	6	8	10	12	14	16	18	20
59/60"	1¾	1¾	1¾	1¾	1¾	1¾	1¾	1¾	1¾	1¾	1¾
Contrast	¼	¼	¼	¼	¼	¼	¼	¼	¼	¼	¼

FINISHED MEASUREMENTS (inches)

BUST	32	33	34	35	36½	38	39½	41	43	45	47
WAIST	30	31	32	33	34½	36	37½	39	41	42	45
HEM	32	33	34	35	36½	38	39½	41	43	45	47
LENGTH	21½	21¾	22	22½	22½	22¾	23	23¼	23¾	23¾	24