

GRANVILLE SHIRT / 3 VIEWS

RECOMMENDED FABRICS: Lightweight woven fabrics such as poplin, lawn, voile, chambray, shirting fabrics, or seersucker. Allow extra fabric to match plaids, stripes, or one-way designs.

NOTIONS: Thread, $\frac{3}{8}$ yard (0.8m) of interfacing. View A: Eleven $\frac{1}{2}$ " (1.2cm) buttons. View B & C: Nine $\frac{1}{2}$ " (1.2cm) buttons.

BODY MEASUREMENTS (centimetres)

	0	2	4	6	8	10	12	14	16	18	20
BUST	76	79	81	84	88	91	95	99	104	109	114
WAIST	61	64	66	69	72	76	80	84	89	94	99
HIP	91	94	97	99	103	107	110	114	119	125	130

FABRIC REQUIREMENTS (metres)

VIEW	0	2	4	6	8	10	12	14	16	18	20
VIEW A	2.7	2.7	2.7	2.7	2.7	2.7	3.0	3.0	3.0	3.0	3.0
	1.15cm	1.15cm	1.15cm	1.15cm	1.15cm	1.15cm	1.15cm	1.15cm	1.15cm	1.15cm	1.15cm
VIEW B	0	2	4	6	8	10	12	14	16	18	20
	1.15cm	1.15cm	1.15cm	1.15cm	1.15cm	1.15cm	1.15cm	1.15cm	1.15cm	1.15cm	1.15cm
VIEW C	0	2	4	6	8	10	12	14	16	18	20
	1.15cm	1.15cm	1.15cm	1.15cm	1.15cm	1.15cm	1.15cm	1.15cm	1.15cm	1.15cm	1.15cm

FINISHED MEASUREMENTS (centimetres)

BUST	86	89	91	94	98	102	105	109	114	119	124
WAIST	76	79	81	84	88	91	95	99	104	109	114
HEM	99	102	104	107	110	114	117	122	127	132	
LENGTH	65	65	66	67	67	68	69	69	70	70	71

DESCRIPTION: Fitted shirt features two-piece collar with stand, self-lined yoke and shaped hem. Princess seam shaping creates a great fit through the back. Bust darts add shape to the front. Long sleeves have buttoned cuffs and tailored placket. View A has front pockets with flaps. View B has one front pocket. View C has no pockets.

BODY MEASUREMENTS (inches)

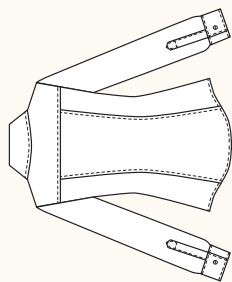
	0	2	4	6	8	10	12	14	16	18	20
BUST	30	31	32	33	34 $\frac{1}{2}$	36	37 $\frac{1}{2}$	39	41	43	45
WAIST	24	25	26	27	28 $\frac{1}{2}$	30	31 $\frac{1}{2}$	33	35	37	39
HIP	36	37	38	39	40 $\frac{1}{2}$	42	43 $\frac{1}{2}$	45	47	49	51

FABRIC REQUIREMENTS (yards)

VIEW	0	2	4	6	8	10	12	14	16	18	20
VIEW A	4.4/4.5"	3	3	3	3	3	3 $\frac{1}{2}$	3 $\frac{1}{2}$	3 $\frac{1}{2}$	3 $\frac{1}{2}$	3 $\frac{1}{2}$
	59/60"	2	2	2	2	2	2 $\frac{1}{2}$	2 $\frac{1}{2}$	2 $\frac{1}{2}$	2 $\frac{1}{2}$	2 $\frac{1}{2}$
VIEW B	0	2	4	6	8	10 <td>12</td> <td>14</td> <td>16</td> <td>18</td> <td>20</td>	12	14	16	18	20
	4.4/4.5"	3	3	3	3	3	3 $\frac{1}{2}$	3 $\frac{1}{2}$	3 $\frac{1}{2}$	3 $\frac{1}{2}$	3 $\frac{1}{2}$
	59/60"	2	2	2	2	2	2 $\frac{1}{2}$	2 $\frac{1}{2}$	2 $\frac{1}{2}$	2 $\frac{1}{2}$	2 $\frac{1}{2}$
VIEW C	0	2	4	6	8	10 <td>12</td> <td>14</td> <td>16</td> <td>18</td> <td>20</td>	12	14	16	18	20
	4.4/4.5"	2 $\frac{1}{2}$	2 $\frac{1}{2}$	2 $\frac{1}{2}$	2 $\frac{1}{2}$	2 $\frac{1}{2}$	3	3	3	3	3
	59/60"	2	2	2	2	2	2 $\frac{1}{2}$	2 $\frac{1}{2}$	2 $\frac{1}{2}$	2 $\frac{1}{2}$	2 $\frac{1}{2}$

FINISHED MEASUREMENTS (inches)

BUST	34	35	36	37	38 $\frac{1}{2}$	40	41 $\frac{1}{2}$	43	45	47	49
WAIST	30	31	32	33	34 $\frac{1}{2}$	36	37 $\frac{1}{2}$	39	41	43	45
HEM	39	40	41	42	43 $\frac{1}{2}$	45	44 $\frac{1}{2}$	46	48	50	52
LENGTH	25 $\frac{1}{2}$	25 $\frac{1}{2}$	26	26 $\frac{1}{2}$	26 $\frac{1}{2}$	26 $\frac{1}{2}$	27	27 $\frac{1}{2}$	27 $\frac{1}{2}$	27 $\frac{1}{2}$	28



BACK - ALL VIEWS

SNAP ME!



View images of the shirt online

Get the free mobile app at <http://gettag.mobi>