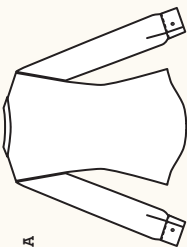


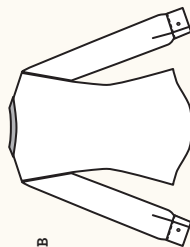
OAKRIDGE BLOUSE / 3 VIEWS

DESCRIPTION: Fitted, button front blouse features front bust darts, long sleeves with placket and cuffs, and shaped hem. View A features a bias bow collar. View B features a contrast bow collar, and View C is collarless.

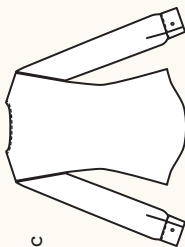
BACK



A



B



C

SNAP ME!



View images of
the shirt online

Get the free
mobile app at
<http://gettag.mobi>

RECOMMENDED FABRICS: Lightweight woven fabrics such as lawn or voile, chambray, challis, silk charmeuse or crepe de chine. Allow extra fabric to match plaids, stripes, or one way designs.

NOTIONS: Thread, $\frac{3}{4}$ " yards (0.6m) of interfacing, seven $\frac{1}{2}$ " (1.2cm) buttons. Optional for View C: One $\frac{1}{4}$ " (6mm) sew-on snap.

BODY MEASUREMENTS (centimetres)

	0	2	4	6	8	10	12	14	16	18	20
BUST	76	79	81	84	88	91	95	99	104	109	114
WAIST	61	64	66	69	72	76	80	84	89	94	99
HIP	91	94	97	99	103	107	110	114	119	125	130

FABRIC REQUIREMENTS (metres)

VIEW	0	2	4	6	8	10	12	14	16	18	20
VIEW A	3.0	3.0	3.0	3.0	3.0	3.0	3.2	3.2	3.2	3.2	3.2
115cm	2.1	2.1	2.1	2.1	2.1	2.1	2.3	2.3	2.3	2.3	2.3
150cm	2.1	2.1	2.1	2.1	2.1	2.1	2.3	2.3	2.3	2.3	2.3
VIEW B	0	2	4	6	8	10	12	14	16	18	20
115cm	3.2	3.2	3.2	3.2	3.2	3.2	3.4	3.4	3.4	3.4	3.4
150cm	2.3	2.3	2.3	2.3	2.3	2.3	2.5	2.5	2.5	2.5	2.5
Contrast	0.9	0.9	0.9	0.9	0.9	0.9	0.9	0.9	0.9	0.9	0.9
VIEW C	0	2	4	6	8	10	12	14	16	18	20
115cm	2.7	2.7	2.7	2.7	2.7	2.7	3.0	3.0	3.0	3.0	3.0
150cm	1.8	1.8	1.8	1.8	1.8	1.8	2.3	2.3	2.3	2.3	2.3

FINISHED MEASUREMENTS (centimetres)

BUST	86	89	91	94	98	102	105	109	114	119	124
WAIST	76	79	81	84	88	91	95	99	104	109	114
HEM	99	102	104	107	110	114	113	117	122	127	132
LENGTH	65	65	66	67	67	68	69	69	70	70	71

BODY MEASUREMENTS (inches)

	0	2	4	6	8	10	12	14	16	18	20
BUST	30	31	32	33	34½	36	37½	39	41	43	45
WAIST	24	25	26	27	28½	30	31½	33	35	37	39
HIP	36	37	38	39	40½	42	43½	45	47	49	51

FABRIC REQUIREMENTS (yards)

VIEW	0	2	4	6	8	10	12	14	16	18	20
VIEW A	4.4/4.5"	3½	3½	3½	3½	3½	3½	3½	3½	3½	3½
4.4/4.5"	2½	2½	2½	2½	2½	2½	2½	2½	2½	2½	2½
5.9/6.0"	2½	2½	2½	2½	2½	2½	2½	2½	2½	2½	2½
VIEW B	0	2	4	6	8	10	12	14	16	18	20
4.4/4.5"	3½	3½	3½	3½	3½	3½	3½	3½	3½	3½	3½
5.9/6.0"	2½	2½	2½	2½	2½	2½	2½	2½	2½	2½	2½
Contrast	1	1	1	1	1	1	1	1	1	1	1
VIEW C	0	2	4	6	8	10	12	14	16	18	20
4.4/4.5"	3	3	3	3	3	3	3½	3½	3½	3½	3½
5.9/6.0"	2	2	2	2	2	2	2½	2½	2½	2½	2½

FINISHED MEASUREMENTS (inches)

BUST	34	35	36	37	38½	40	41½	43	45	47	49
WAIST	30	31	32	33	34½	36	37½	39	41	43	45
HEM	39	40	41	42	43½	45	44½	46	48	50	52
LENGTH	25½	25½	26	26½	26½	26½	27	27¼	27¼	27¼	28