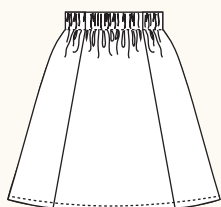
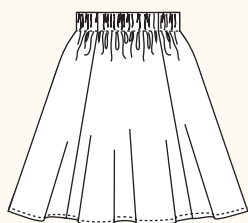


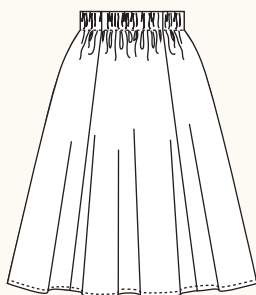
RAE SKIRT / 3 VIEWS



A - BACK



B - BACK



C - BACK

SNAP ME!

View images of
the skirt online



Get the free
mobile app at
<http://gettag.mobi>

DESCRIPTION: Loose-fitting elastic waist skirt is softly flared with vertical seamlines. Designed for true beginners, it makes an excellent first sewing project. Detailed instructions for new sewers. View A is slightly flared, View B is more flared, both sit above the knee. View C is knee length.

RECOMMENDED FABRICS: Lightweight woven fabrics such as cotton and cotton blends, challis, rayon, linen and linen blends. Choose lightweight fabrics that will not be too bulky when gathered. Not recommended for plaids or stripes.

NOTIONS: Thread, one yard of 1" wide elastic. Optional: 2" piece of ribbon to mark centre back.

BODY MEASUREMENTS (inches*)

	0	2	4	6	8	10	12	14	16
BUST	30	31	32	33	34½	36	37½	39	41
WAIST	24	25	26	27	28½	30	31½	33	35
HIP	36	37	38	39	40½	42	43½	45	47

FABRIC REQUIREMENTS (yards*)

VIEW A

44/45"	1½	1½	1½	1½	1½	1½	1½	1½	1½
59/60"	1½	1½	1½	1½	1½	1½	1½	1½	1½

VIEW B

44/45"	2¾	2¾	2¾	2¾	2¾	2¾	2¾	2¾	2¾
59/60"	1½	1½	1½	1½	1½	1½	1½	1½	1½

VIEW C

44/45"	3½	3½	3½	3½	3½	3½	3½	3½	3½
59/60"	1¾	1¾	1¾	1¾	1¾	1¾	1¾	1¾	1¾

FINISHED MEASUREMENTS (inches*)

WAIST**	22	23	24	25	26½	28	29½	31	33
HIP A	42	43	44	45	46½	48	49½	51	53
HIP B&C	46	47	48	49	50½	52	53½	55	57
LENGTH A&B	17½	17¾	18	18¾	18½	18¾	19	19¾	19½
LENGTH C	23½	23¾	24	24¾	24½	24¾	25	25¾	25½

*Metric conversions online at sewaholicpatterns.com/rae-skirt

**Waist is elastic and will stretch

© 2014 Sewaholic Patterns | Made in Canada | Printed on recycled paper