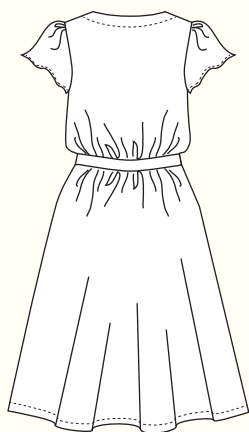


YALETOWN DRESS & BLOUSE / 2 VIEWS



A - BACK

DESCRIPTION: Loose-fitting, unlined wrap-style dress and blouse has a crossover neckline, elastic waistline covered with a fabric tie belt and short flutter sleeves. Optional button & loop closure at the front neckline. View A is a knee length dress with in-seam pockets. View B is a hip-length blouse.

RECOMMENDED FABRICS: Lightweight woven fabrics such as cotton voile or lawn, rayon challis, silk charmeuse or crepe. Choose a fabric with drape for best results. Allow extra fabric to match plaids, stripes or one-way designs.

NOTIONS: Thread, one yard of $\frac{1}{4}$ " wide elastic, one yard of fusible interfacing. Optional: one $\frac{3}{8}$ " button.

BODY MEASUREMENTS (inches*)

	0	2	4	6	8	10	12	14	16
BUST	30	31	32	33	34½	36	37½	39	41
WAIST	24	25	26	27	28½	30	31½	33	35
HIP	36	37	38	39	40½	42	43½	45	47

FABRIC REQUIREMENTS (yards*)

VIEW A									
44/45"	4¾	4¾	4¾	4¾	4½	4½	4½	4½	4½
59/60"	3¾	3¾	3¾	3¾	3¾	4	4	4	4
VIEW B									
44/45"	2¾	2¾	2¾	2¾	2¾	2¾	2¾	2¾	2¾
59/60"	2	2	2	2	2	2¼	2¼	2¼	2¼

FINISHED MEASUREMENTS (inches*)

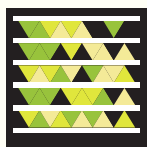
	0	2	4	6	8	10	12	14	16
BUST	34	35	36	37	38½	40	41½	43	45
WAIST	22	23	24	25	26½	28	29½	31	33
HIP	41	42	43	44	45½	47	48½	50	52
LENGTH A	41½	41¾	42	42¼	42½	42¾	43	43¾	43½
LENGTH B	23½	23¾	24	24¼	24½	24¾	25	25¾	25½

*Metric conversions online at sewaholicpatterns.com/yaletown-dress-and-blouse

**Waist is elastic and will stretch

SNAP ME!

View images of
the real dress and
blouse online



Get the free
mobile app at
<http://gettag.mobi>