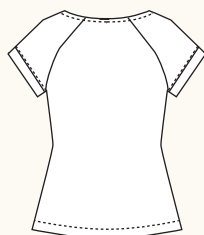
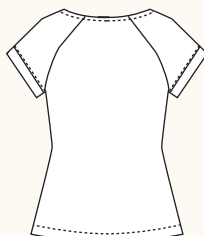


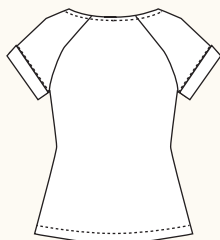
## BELCARRA BLOUSE / 3 VIEWS



A - BACK



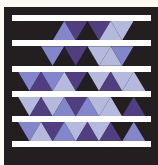
B - BACK



C - BACK

## SNAP ME!

View images of  
the blouse online



Get the free  
mobile app at  
<http://gettag.mobi>

**DESCRIPTION:** Semi-fitted pullover blouse features a wide neckline finished with bias binding, subtle waist shaping and raglan sleeves with bias cuffs. View B features tucks along the sleeves. View C has turnback cuffs and a front patch pocket.

**RECOMMENDED FABRICS:** Lightweight woven fabrics such as cotton voile or lawn, rayon challis, silk charmeuse or crepe, shirting fabrics. For View B, choose a crisp fabric like cotton lawn or shirting for best results. Allow extra fabric to match plaids, stripes or one-way designs.

**NOTIONS:** Thread.

## BODY MEASUREMENTS (centimetres)

	0	2	4	6	8	10	12	14	16
BUST	76	79	81	84	88	91	95	99	104
WAIST	61	64	66	69	72	76	80	84	89
HIP	91	94	97	99	103	107	110	114	119

## FABRIC REQUIREMENTS (metres)

## VIEW A

115cm	1.8	1.8	1.8	1.8	1.8	2.1	2.1	2.1	2.1
150cm	1.6	1.6	1.6	1.6	1.6	1.8	1.8	1.8	1.8

## VIEW B

115cm	1.8	1.8	1.8	1.8	1.8	2.1	2.1	2.1	2.1
150cm	1.6	1.6	1.6	1.6	1.6	1.8	1.8	1.8	1.8

## VIEW C

115cm	1.8	1.8	1.8	1.8	1.8	2.1	2.1	2.1	2.1
150cm	1.6	1.6	1.6	1.6	1.6	1.8	1.8	1.8	1.8

## FINISHED MEASUREMENTS (centimetres)

BUST	86	89	91	94	98	102	105	109	114
WAIST	79	81	84	86	90	94	98	102	107
HEM	99	102	104	107	110	114	118	122	127
BACK (length)	55	56	57	57	58	58	59	60	60