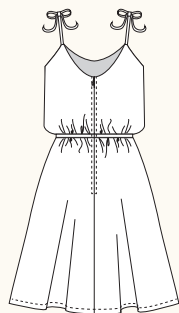
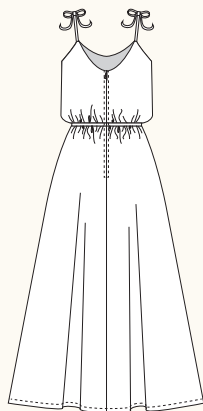


## SALTSPRING DRESS / 2 VIEWS



A - BACK



B - BACK

**DESCRIPTION:** Sundress has self-lined bodice, elastic waistline and a centre back zipper closure. Dress features inseam pockets, flared skirt, and adjustable spaghetti straps that tie in a bow over the shoulders. Bodice lining is cut shorter than the bodice to create a built-in bloused effect. View A is above knee length. View B is full length.

**RECOMMENDED FABRICS:** Lightweight woven fabrics such as rayon challis, polyester crepe, charmeuse, lightweight jersey knits. Choose a fabric with drape for the best fit. Allow extra fabric to match plaids, stripes or one-way designs.

**NOTIONS:** Thread, 1 yard of ¼" elastic, one 14" regular zipper.

## BODY MEASUREMENTS (centimetres\*)

	0	2	4	6	8	10	12	14	16
BUST	76	79	81	84	88	91	95	99	104
WAIST	61	64	66	69	72	76	80	84	89
HIP	91	94	97	99	103	107	110	114	119

## FABRIC REQUIREMENTS (metres\*)

## VIEW A

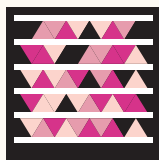
115cm	3.0	3.0	3.0	3.0	3.0	3.0	3.0	3.0	3.0
150cm	2.1	2.1	2.1	2.1	2.1	2.1	2.1	2.1	2.1

## VIEW B

150cm	3.2	3.2	3.2	3.2	3.2	3.2	3.2	3.2	3.2
-------	-----	-----	-----	-----	-----	-----	-----	-----	-----

## SNAP ME!

View images of  
the dress online



Get the free  
mobile app at  
<http://gettag.mobi>

## FINISHED MEASUREMENTS (centimetres\*)

BUST	81	84	86	89	93	97	100	104	109
WAIST***	56	58	61	64	67	71	75	79	84
HIP	127	130	132	135	138	142	146	150	155
LENGTH A**	52	52	52	52	52	52	52	52	52
LENGTH B**	103	103	103	103	103	103	103	103	103

\*Metric conversions online at [sewaholicpatterns.com/product/1303-salt-spring-dress](http://sewaholicpatterns.com/product/1303-salt-spring-dress)

\*\*Length is measured from waistline to hem of skirt

\*\*\*Waist is elastic and will stretch