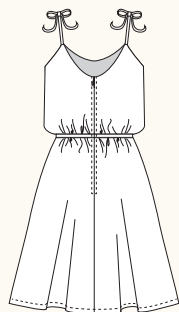
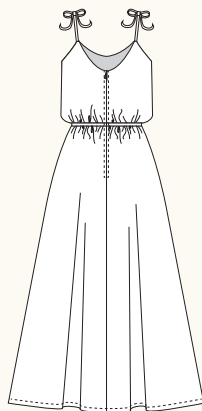


## SALTSPRING DRESS / 2 VIEWS



A - BACK



B - BACK

**DESCRIPTION:** Sundress has self-lined bodice, elastic waistline and a centre back zipper closure. Dress features inseam pockets, flared skirt, and adjustable spaghetti straps that tie in a bow over the shoulders. Bodice lining is cut shorter than the bodice to create a built-in bloused effect. View A is above knee length. View B is full length.

**RECOMMENDED FABRICS:** Lightweight woven fabrics such as rayon challis, polyester crepe, charmeuse, lightweight jersey knits. Choose a fabric with drape for the best fit. Allow extra fabric to match plaids, stripes or one-way designs.

**NOTIONS:** Thread, 1 yard of ¼" elastic, one 14" regular zipper.

## BODY MEASUREMENTS (inches\*)

	0	2	4	6	8	10	12	14	16
BUST	30	31	32	33	34½	36	37½	39	41
WAIST	24	25	26	27	28½	30	31½	33	35
HIP	36	37	38	39	40½	42	43½	45	47

## FABRIC REQUIREMENTS (yards\*)

## VIEW A

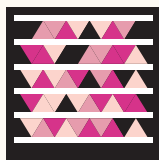
44/45"	3¼	3¼	3¼	3¼	3¼	3¼	3¼	3¼	3¼
59/60"	2¼	2¼	2¼	2¼	2¼	2¼	2¼	2¼	2¼

## VIEW B

59/60"	3½	3½	3½	3½	3½	3½	3½	3½	3½
--------	----	----	----	----	----	----	----	----	----

## SNAP ME!

View images of  
the dress online



Get the free  
mobile app at  
<http://gettag.mobi>

## FINISHED MEASUREMENTS (inches\*)

BUST	32	33	34	35	36½	38	39½	41	43
WAIST***	22	23	24	25	26½	28	29½	31	33
HIP	50	51	52	53	54½	56	57½	59	61
LENGTH A**	20½	20½	20½	20½	20½	20½	20½	20½	20½
LENGTH B**	40½	40½	40½	40½	40½	40½	40½	40½	40½

\*Metric conversions online at [sewaholicpatterns.com/product/1303-salt-spring-dress](http://sewaholicpatterns.com/product/1303-salt-spring-dress)

\*\*Length is measured from waistline to hem of skirt

\*\*\*Waist is elastic and will stretch