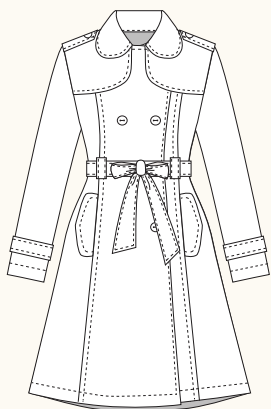


## ROBSON COAT / 1 VIEW



FRONT

**DESCRIPTION:** Trench coat features rounded collar and lapel, princess seams, and front pockets. Double-breasted with storm flaps and epaulettes for a classic look. Coat is unlined, with inner seams bound with bias tape for a clean finish. Closes with buttons and a fabric tie belt to create an hourglass silhouette.

**RECOMMENDED FABRICS:** Light to medium weight woven fabrics such as cotton twill or canvas, cotton nylon blends, gabardine. Allow extra fabric to match plaids, stripes or one-way designs.

**NOTIONS:** Thread, sixteen 2 cm flat buttons, 2.3 metres fusible interfacing and 11 metres of purchased 13mm single-fold bias tape.

## BODY MEASUREMENTS (centimetres\*)

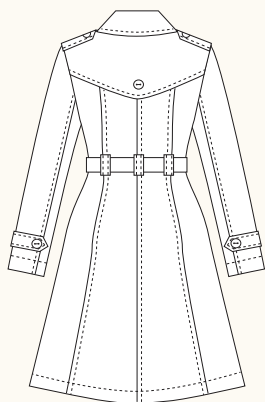
	0	2	4	6	8	10	12	14	16
BUST	76	79	81	84	88	91	95	99	104
WAIST	61	64	66	69	72	76	80	84	89
HIP	91	94	97	99	103	107	110	114	119

## FABRIC REQUIREMENTS (metres\*)

	0	2	4	6	8	10	12	14	16
115cm	5.5	5.5	5.5	5.5	5.5	5.7	5.7	5.7	5.7
150cm	4.1	4.1	4.1	4.1	4.1	4.3	4.3	4.3	4.3

## FINISHED MEASUREMENTS (centimetres\*)

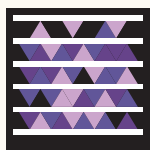
	0	2	4	6	8	10	12	14	16
BUST	84	86	89	91	95	99	103	107	112
WAIST	84	86	89	91	95	99	103	107	112
HIP	114	117	119	122	126	130	133	137	142
BACK (length)	95	96	97	97	98	98	99	100	100



BACK

## SNAP ME!

View images of the  
real coat online



Get the free  
mobile app at  
<http://gettag.mobi>