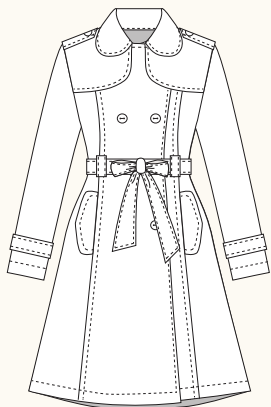


## ROBSON COAT / 1 VIEW



FRONT

**DESCRIPTION:** Trench coat features rounded collar and lapel, princess seams, and front pockets. Double-breasted with storm flaps and epaulettes for a classic look. Coat is unlined, with inner seams bound with bias tape for a clean finish. Closes with buttons and a fabric tie belt to create an hourglass silhouette.

**RECOMMENDED FABRICS:** Light to medium weight woven fabrics such as cotton twill or canvas, cotton nylon blends, gabardine. Allow extra fabric to match plaids, stripes or one-way designs.

**NOTIONS:** Thread, sixteen  $\frac{3}{4}$ " flat buttons,  $2\frac{1}{2}$  yards fusible interfacing and 12 yards of purchased  $\frac{1}{2}$ " single-fold bias tape.

## BODY MEASUREMENTS (inches\*)

	0	2	4	6	8	10	12	14	16
BUST	30	31	32	33	34½	36	37½	39	41
WAIST	24	25	26	27	28½	30	31½	33	35
HIP	36	37	38	39	40½	42	43½	45	47

## FABRIC REQUIREMENTS (yards\*)

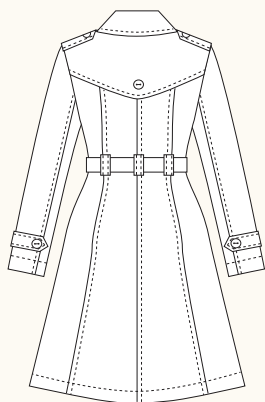
	0	2	4	6	8	10	12	14	16
44/45"	6	6	6	6	6	6¼	6¼	6¼	6¼
59/60"	4½	4½	4½	4½	4½	4¾	4¾	4¾	4¾

## FINISHED MEASUREMENTS (inches\*)

	0	2	4	6	8	10	12	14	16
BUST	33	34	35	36	37½	39	40½	42	44
WAIST	33	34	35	36	37½	39	40½	42	44
HIP	45	46	47	48	49½	51	52½	54	56
BACK (length)	37½	37¾	38	38¼	38½	38¾	39	39¼	39½

\*Metric conversions online at [sewaholicpatterns.com/product/1301-robson-coat](http://sewaholicpatterns.com/product/1301-robson-coat)

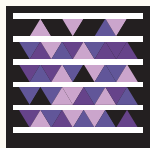
© 2013 Sewaholic Patterns | ♣ Made in Canada | Printed on recycled paper.



BACK

## SNAP ME!

View images of the  
real coat online



Get the free  
mobile app at  
<http://gettag.mobi>