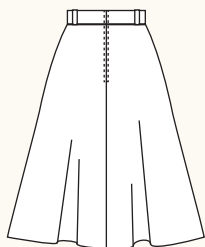
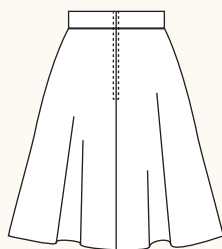


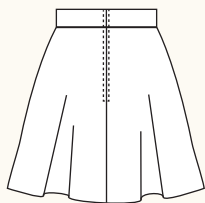
HOLLYBURN SKIRT / 3 VIEWS



A - BACK



B - BACK



C - BACK

DESCRIPTION: Flared skirts in three lengths have front slash pockets and centre back zipper closure. View A is below the knee with optional belt loops. View B is knee length with button tabs on the waistband. View C is above the knee.

RECOMMENDED FABRICS: Light or medium weight woven fabrics such as cotton poplin and lawn, linen, lightweight denim, suiting fabrics. Not recommended for plaids, stripes or one-way designs.

NOTIONS: Thread, 1 yard of fusible interfacing, 9" regular zipper. View B: Two $\frac{3}{4}$ " buttons.

BODY MEASUREMENTS (inches*)

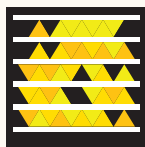
| | 0 | 2 | 4 | 6 | 8 | 10 | 12 | 14 | 16 |
|-------|----|----|----|----|-----|----|-----|----|----|
| BUST | 30 | 31 | 32 | 33 | 34½ | 36 | 37½ | 39 | 41 |
| WAIST | 24 | 25 | 26 | 27 | 28½ | 30 | 31½ | 33 | 35 |
| HIP | 36 | 37 | 38 | 39 | 40½ | 42 | 43½ | 45 | 47 |

FABRIC REQUIREMENTS (yards*)

| | | | | | | | | | |
|------------|----|----|----|----|----|----|----|----|----|
| A - 44/45" | 3 | 3 | 3 | 3¼ | 3¼ | 3¼ | 3½ | 3½ | 3½ |
| A - 59/60" | 2 | 2 | 2 | 2 | 2 | 2¼ | 2¼ | 2¼ | 2¼ |
| B - 44/45" | 2¾ | 2¾ | 2¾ | 3 | 3 | 3 | 3¼ | 3¼ | 3¼ |
| B - 59/60" | 1¾ | 1¾ | 1¾ | 1¾ | 1¾ | 2 | 2 | 2 | 2 |
| C - 44/45" | 2¾ | 2¾ | 2¾ | 2½ | 2½ | 2½ | 2¾ | 2¾ | 2¾ |
| C - 59/60" | 1½ | 1½ | 1½ | 1½ | 1½ | 1¾ | 1¾ | 1¾ | 1¾ |

SNAP ME!

View images of the real skirt online:



Get the free mobile app at <http://gettag.mobi>

FINISHED MEASUREMENTS (inches*)

| | | | | | | | | | |
|----------|-----|-----|----|-----|-----|-----|-----|-----|-----|
| WAIST | 25 | 26 | 27 | 28 | 29½ | 31 | 31½ | 34 | 36 |
| HIP A | 46 | 47 | 48 | 49 | 50½ | 52 | 53½ | 55 | 57 |
| HIP B | 52 | 53 | 54 | 55 | 56½ | 58 | 59½ | 61 | 63 |
| HIP C | 58 | 59 | 60 | 61 | 62½ | 64 | 65½ | 67 | 69 |
| LENGTH A | 24½ | 24¾ | 25 | 25¼ | 25½ | 25¾ | 26 | 26¼ | 26½ |
| LENGTH B | 21½ | 21¾ | 22 | 22¼ | 22½ | 22¾ | 23 | 23¼ | 23½ |
| LENGTH C | 17½ | 17¾ | 18 | 18¼ | 18½ | 18¾ | 19 | 19¼ | 19½ |