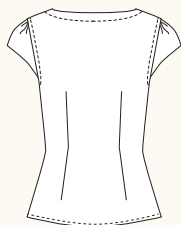


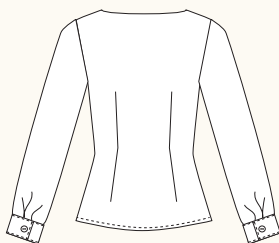
ALMA BLOUSE / 3 VIEWS



A - BACK



B - BACK



C - BACK

DESCRIPTION: Semi-fitted pullover blouse features neckline and sleeve variations and optional fabric belt. View A has a notched neckline and cap sleeves. View B has a contrast Peter Pan collar and elbow-length sleeves. View C has long sleeves with cuffs and a round neckline. Mix and match any sleeve with any neckline for unlimited possibilities.

RECOMMENDED FABRICS: Lightweight woven fabrics such as cotton voile or lawn, rayon challis, shirting fabrics, seersucker, cotton blends. Allow extra fabric to match plaids or stripes.

NOTIONS: Thread, 1 yard of fusible interfacing, one 12" invisible zipper. View C: Two $\frac{3}{4}$ " buttons.

BODY MEASUREMENTS (inches*)

	0	2	4	6	8	10	12	14	16
BUST	30	31	32	33	34½	36	37½	39	41
WAIST	24	25	26	27	28½	30	31½	33	35
HIP	36	37	38	39	40½	42	43½	45	47

FABRIC REQUIREMENTS (yards*)

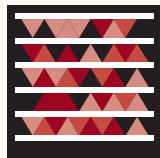
A - 44/45"	2	2	2	2	2	2¼	2¼	2¼	2¼
A - 59/60"	1¾	1¾	1¾	1¾	1¾	1¾	1¾	1¾	1¾
B - 44/45"	2	2	2	2	2	2¼	2¼	2¼	2¼
B - 59/60"	1¾	1¾	1¾	1¾	1¾	1¾	1¾	1¾	1¾
B - Contrast 44/45"	¾	¾	¾	¾	¾	¾	¾	¾	¾
C - 44/45"	2½	2½	2½	2½	2½	2½	2½	2½	2½
C - 59/60"	2½	2½	2½	2½	2½	2½	2½	2½	2½

FINISHED MEASUREMENTS (inches*)

BUST	34	35	36	37	38½	40	41½	43	45
WAIST	30	31	32	33	34½	36	37½	39	41
HEM	36	37	38	39	40½	42	43½	45	47
BACK (length)	22	22¼	22½	22¾	23	23¼	23½	23¾	24

SNAP ME!

View images of
the blouse online



Get the free
mobile app at
<http://gettag.mobi>