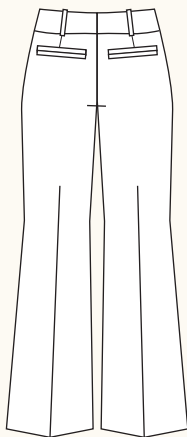


## THURLOW TROUSERS AND SHORTS / 2 VIEWS



A - BACK



B - BACK

**DESCRIPTION:** Fitted trousers and shorts feature front fly closure, slash front pockets and a back extension for easy alteration. Trousers and shorts sit below natural waistline with contoured waistband. View A trousers are slightly flared. View B shorts can be worn cuffed or straight, with an optional grosgrain ribbon belt.

**RECOMMENDED FABRICS:** Medium weight woven fabrics, such as cotton twill, denim, suiting and wool blends. Stretch wovens are also suitable. Lining: lightweight woven fabric such as cotton batiste. Allow extra fabric to match plaids or stripes.

**NOTIONS:** Thread, 1 metre of fusible interfacing, one 10cm zipper, one hook and eye closure, one 2cm button. Optional: 2 metres of 5cm wide grosgrain ribbon.

## BODY MEASUREMENTS (centimetres\*)

	0	2	4	6	8	10	12	14	16
BUST	76	79	81	84	88	91	95	99	104
WAIST	61	64	66	69	72	76	80	84	89
HIP	91	94	97	99	103	107	110	114	119

## FABRIC REQUIREMENTS (metres\*)

## VIEW A

115 cm	3.0	3.0	3.0	3.0	3.0	3.0	3.0	3.0	3.0
150 cm	2.3	2.3	2.3	2.3	2.3	2.3	2.3	2.3	2.3
Lining 115 cm	0.9	0.9	0.9	0.9	0.9	0.9	0.9	0.9	0.9

## VIEW B

115 cm	1.8	1.8	1.8	1.8	1.8	1.8	1.8	1.8	1.8
150 cm	1.1	1.1	1.1	1.1	1.1	1.1	1.1	1.1	1.1
Lining 115 cm	0.9	0.9	0.9	0.9	0.9	0.9	0.9	0.9	0.9

## FINISHED MEASUREMENTS (centimetres\*)

WAIST	74	76	79	81	85	89	93	97	102
HIP	102	104	107	109	113	117	121	124	130
INSEAM A	83	83	84	84	85	86	86	87	88
INSEAM B (uncuffed)	13	13	13	13	13	13	13	13	13

## SNAP ME!

View images of the trousers online



Get the free mobile app at <http://gettag.mobi>