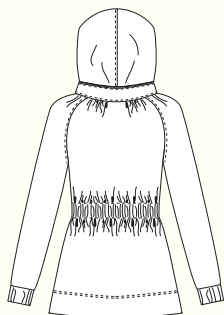
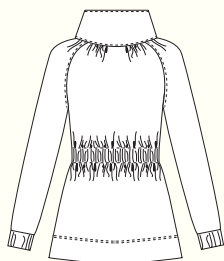


MINORU JACKET / 2 VIEWS



A - BACK



B - BACK

DESCRIPTION: Weekend jacket features a wide collar, raglan sleeves and a flattering elastic waistline. Jacket is fully lined. Interior patch pockets have optional velcro closures. View A has a hidden hood inside the collar, View B has a regular stand collar.

RECOMMENDED FABRICS: Light to medium weight woven fabrics such as cotton twill or canvas. For lining: lining fabrics, or mesh. Not suitable for plaids, stripes, or one-way designs.

NOTIONS: Thread, 2 metres of 5 cm elastic, 1 metre of fusible interfacing, 70 cm separating zipper (sizes 0-8), 75 cm separating zipper (sizes 10-16). View A: 45cm closed-end zipper. Optional: 5 cm piece of velcro.

BODY MEASUREMENTS (centimetres*)

	0	2	4	6	8	10	12	14	16
BUST	76	79	81	84	88	91	95	99	104
WAIST	61	64	66	69	72	76	80	84	89
HIP	91	94	97	99	103	107	110	114	119

FABRIC REQUIREMENTS (metres*)

VIEW A

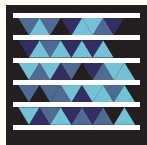
115 cm	3.7	3.7	3.7	3.7	3.9	3.9	3.9	3.9	3.9
150 cm	2.3	2.3	2.3	2.3	2.5	2.5	2.5	2.5	2.5
Lining 115 cm	2.5	2.5	2.5	2.5	2.7	2.7	2.7	2.7	2.7

VIEW B

115 cm	3.0	3.0	3.0	3.0	3.2	3.2	3.2	3.2	3.2
150 cm	2.5	2.5	2.5	2.5	2.7	2.7	2.7	2.7	2.7
Lining 115 cm	2.3	2.3	2.3	2.3	2.5	2.5	2.5	2.5	2.5

SNAP ME!

View images of the real jacket online



Get the free mobile app at <http://gettag.mobi>

FINISHED MEASUREMENTS (centimetres*)

BUST	91	94	97	99	103	107	110	114	119
WAIST	76	79	81	84	88	91	95	99	104
HIP	109	112	114	117	121	124	128	132	137
LENGTH	70	70	71	72	72	73	74	74	75

*Imperial conversions online at sewaholic.net/sewing-pattern-store/1103-minoru-jacket

© 2011 Sewaholic Patterns | Made in Canada | Printed on recycled paper