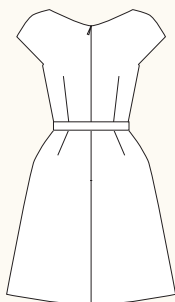
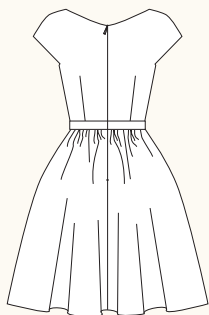


CAMBIE DRESS / 2 VIEWS



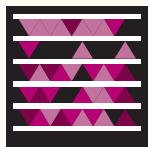
A - BACK



B - BACK

SNAP ME!

View images of the
real dress online



Get the free
mobile app at
<http://gettag.mobi>

DESCRIPTION: Fitted, lined dress features a sweetheart neckline, darted bodice and extended cap sleeves. View A has a slim A-line skirt with slash pockets and View B has a full gathered skirt with inseam pockets.

RECOMMENDED FABRICS: View A: Light to medium weight woven fabrics such as linen, wool blends, cotton sateen. View B: Lightweight woven fabrics such as cotton voile, swiss dot, rayon challis, or silk dupioni. Allow extra fabric to match plaids or stripes.

NOTIONS: Thread, 1.1 metres of fusible interfacing, one 55cm invisible zipper.

BODY MEASUREMENTS (centimetres)

	0	2	4	6	8	10	12	14	16
BUST	76	79	81	84	88	91	95	99	104
WAIST	61	64	66	69	72	76	80	84	89
HIP	91	94	97	99	103	107	110	114	119

FABRIC REQUIREMENTS (metres)

VIEW A

115 cm	2.3	2.3	2.3	2.3	2.3	2.5	2.5	2.5	2.5
150 cm	1.6	1.6	1.6	1.6	1.6	1.8	1.8	1.8	1.8
Lining	2.1	2.1	2.1	2.1	2.1	2.3	2.3	2.3	2.3

VIEW B

115 cm	2.7	2.7	2.7	2.7	2.7	3.0	3.0	3.0	3.0
115 cm	2.3	2.3	2.3	2.3	2.3	2.5	2.5	2.5	2.5
Lining	2.7	2.7	2.7	2.7	3.0	3.0	3.0	3.0	3.0

FINISHED MEASUREMENTS (centimetres)

BUST	84	86	89	91	95	99	103	107	112
WAIST	65	68	70	73	77	81	84	88	93
HIP A	104	107	109	112	116	119	123	127	132
LENGTH**	55	55	56	57	57	58	58	59	60

**Length is measured from waistline to hem of skirt