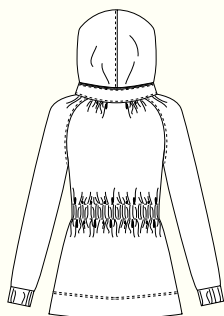
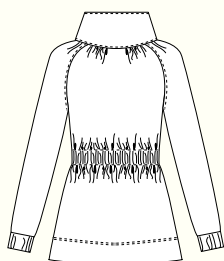


## MINORU JACKET / 2 VIEWS



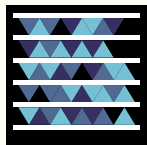
A - BACK



B - BACK

## SNAP ME!

View images of the  
real jacket online



Get the free  
mobile app at  
<http://gettag.mobi>

**DESCRIPTION:** Weekend jacket features a wide collar, raglan sleeves and a flattering elastic waistline. Jacket is fully lined. Interior patch pockets have optional velcro closures. View A has a hidden hood inside the collar, View B has a regular stand collar.

**RECOMMENDED FABRICS:** Light to medium weight woven fabrics such as cotton twill or canvas. For lining: lining fabrics, or mesh. Not suitable for plaids, stripes, or one-way designs.

**NOTIONS:** Thread, 2 yards of 2" elastic, 1 yard of fusible interfacing, 28" separating zipper (sizes 0-8), 30" separating zipper (sizes 10-16). View A: 18" closed-end zipper. Optional: 2" piece of velcro.

## BODY MEASUREMENTS (inches\*)

	0	2	4	6	8	10	12	14	16
BUST	30	31	32	33	34½	36	37½	39	41
WAIST	24	25	26	27	28½	30	31½	33	35
HIP	36	37	38	39	40½	42	43½	45	47

## FABRIC REQUIREMENTS (yards\*)

## VIEW A

44/45"	4	4	4	4	4¼	4¼	4¼	4¼	4¼
59/60"	2½	2½	2½	2½	2¾	2¾	2¾	2¾	2¾
Lining - 45"	2¾	2¾	2¾	2¾	3	3	3	3	3

## VIEW B

44/45"	3¾	3¾	3¾	3¾	3½	3½	3½	3½	3½
59/60"	2¼	2¼	2¼	2¼	2½	2½	2½	2½	2½
Lining - 45"	2½	2½	2½	2½	2¾	2¾	2¾	2¾	2¾

## FINISHED MEASUREMENTS (inches\*)

BUST	36	37	38	39	40½	42	43½	45	47
WAIST	30	31	32	33	34½	36	37½	39	41
HIP	43	44	45	46	47½	49	50½	52	54
LENGTH	27½	27¾	28	28¾	28½	28¾	29	29¼	29½

\*Metric conversions online at [sewaholic.net/sewing-pattern-store/1103-minoru-jacket](http://sewaholic.net/sewing-pattern-store/1103-minoru-jacket)

© 2011 Sewaholic Patterns | Made in Canada | Printed on recycled paper