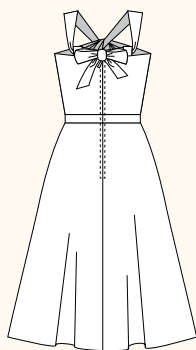
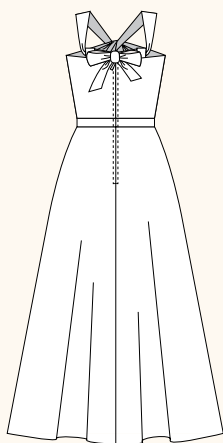


LONSDALE DRESS / 2 VIEWS



A - BACK



B - BACK

DESCRIPTION: Halter-style dress has a fitted, self-lined bodice and flared skirt with front pockets. Knotted neckline features adjustable shoulder straps that tie in a bow at the back. View A is knee length and View B is full length.

RECOMMENDED FABRICS: Lightweight woven fabrics: cotton poplin and lawn, shirting fabrics, linen, silk dupioni. Not suitable for plaids, stripes, or one-way designs.

NOTIONS: Thread, 1 metre of fusible interfacing, one 40cm zipper.

BODY MEASUREMENTS (centimetres)

	0	2	4	6	8	10	12	14	16
BUST	76	79	81	84	88	91	95	99	104
WAIST	61	64	66	69	72	76	80	84	89
HIP	91	94	97	99	103	107	110	114	119

FABRIC REQUIREMENTS (metres)

VIEW A

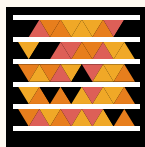
115 cm	3.7	3.7	3.7	3.7	3.9	3.9	3.9	4.1	4.1
150 cm	2.7	2.7	2.7	2.7	3.0	3.0	3.0	3.2	3.2

VIEW B

115 cm	4.3	4.3	4.3	4.6	4.6	4.6	4.6	4.8	4.8
150 cm	3.4	3.4	3.4	3.7	3.7	3.7	3.7	4.1	4.1

SNAP ME!

View images of the real dress online



Get the free mobile app at <http://gettag.mobi>

FINISHED MEASUREMENTS (centimetres)

BUST	84	86	89	91	95	99	105	107	112
WAIST	65	67	69	71	75	79	83	87	92
HIP	117	119	122	124	128	132	136	140	145
LENGTH A**	61	62	63	63	64	64	65	66	66
LENGTH B**	91	92	93	93	94	94	95	96	96

** Length is measured from waistline to hem of skirt.