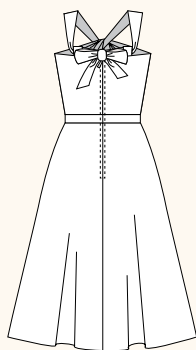
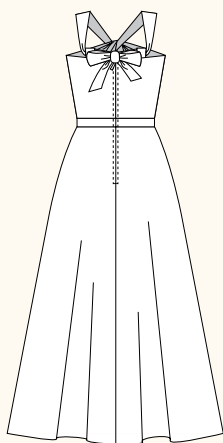


## LONSDALE DRESS / 2 VIEWS



A - BACK



B - BACK

**DESCRIPTION:** Halter-style dress has a fitted, self-lined bodice and flared skirt with front pockets. Knotted neckline features adjustable shoulder straps that tie in a bow at the back. View A is knee length and View B is full length.

**RECOMMENDED FABRICS:** Lightweight woven fabrics: cotton poplin and lawn, shirting fabrics, linen, silk dupioni. Not suitable for plaids, stripes, or one-way designs.

**NOTIONS:** Thread, 1¼ yard of fusible interfacing, thread, one 16" zipper.

## BODY MEASUREMENTS (inches\*)

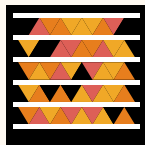
	0	2	4	6	8	10	12	14	16
BUST	30	31	32	33	34½	36	37½	39	41
WAIST	24	25	26	27	28½	30	31½	33	35
HIP	36	37	38	39	40½	42	43½	45	47

## FABRIC REQUIREMENTS (yards\*)

VIEW A									
44/45"	4	4	4	4	4¼	4¼	4¼	4½	4½
59/60"	3	3	3	3	3¼	3¼	3¼	3½	3½
VIEW B									
44/45"	4¾	4¾	4¾	5	5	5	5	5¼	5¼
59/60"	3¾	3¾	3¾	4	4	4	4	4½	4½

## SNAP ME!

View images of the real dress online



Get the free mobile app at <http://gettag.mobi>

## FINISHED MEASUREMENTS (inches\*)

BUST	33	34	35	36	37½	39	41½	42	44
WAIST	25½	26½	27½	28½	30	31½	33	34½	36½
HIP	46	47	48	49	50½	52	53½	55	57
LENGTH A**	24½	24¾	25	25¼	25½	25¾	26	26¼	26½
LENGTH B**	36½	36¾	37	37¼	37½	37¾	38	38¼	38½

\*Metric conversions online at [sewaholic.net/sewing-pattern-store/1102-lonsdale-dress](http://sewaholic.net/sewing-pattern-store/1102-lonsdale-dress)

\*\*Length is measured from waistline to hem of skirt.